

Stabiliser Cylinders 75070.320TRU - 2 off

Folding Cylinders 76090.127TRU - 2 off

Hose Burst Valve VP38

LH Ramp

Locking Cylinders 71625.50 - 4 off

RH Ramp

Hose Burst Valve VP38

Main Ramp Cylinders 75090.305TRU - 2 off

Overcentre Valve HVCD02BS

Control Valve MB-3/7
(with pressure gauge)

For Supply Options -
See sheet 2

Return to Tank


PROPRIETARY AND CONFIDENTIAL
THE INFORMATION CONTAINED IN THIS
DRAWING IS THE SOLE PROPERTY OF
C & C HYDRAULICS LIMITED. ANY
REPRODUCTION IN PART OR AS A WHOLE
WITHOUT THE WRITTEN PERMISSION OF
C & C HYDRAULICS LIMITED IS PROHIBITED.

DO NOT SCALE DRAWING

REMOVE ALL BURRS
AND SHARP EDGES

MATERIAL	
WEIGHT	kg
SURFACE FINISH	N8 UNLESS OTHERWISE STATED
UNLESS OTHERWISE STATED: DIMENSIONS ARE IN MM TOLERANCES: FRACTIONAL ± 0.25 ANGULAR: MACH $\pm 0.5^\circ$ BEND ± 1 TWO PLACE DECIMAL ± 0.1 THREE PLACE DECIMAL ± 0.01	

NAME	DATE
N.Carter	03/08/2023
DRAWN	
CHECKED	
ENG APPR.	
MFG APPR.	
Q.A.	
COMMENTS:	

 **C & C HYDRAULICS LTD**

TITLE:
**Cheese Wedge Hydraulic
Arrangement**

SIZE	DWG. NO.	REV
B		

SCALE: 1:5	WEIGHT:	SHEET 1 OF 3
------------	---------	--------------

Hydraulic Power Pack YBZ6-F2.7E2MO/WUUON1



Option 1

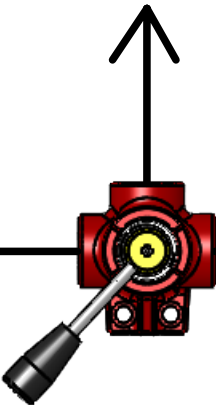
P

To pressure port on MB-3/7 Valve

T

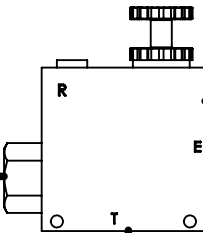
Crane

PTO-Pump



High Pressure Manual 2 way Diverter Valve 903211

Pressure Compensated Flow Control Valve R930004232



To pressure port on MB-3/7 Valve

T

Option 2

REMOVE ALL BURRS
AND SHARP EDGES

MATERIAL

WEIGHT

SURFACE
FINISH

kg
N8 UNLESS OTHER-
WISE STATED

UNLESS OTHERWISE STATED:
DIMENSIONS ARE IN MM
TOLERANCES:
FRACTIONAL ± 0.25
ANGULAR: MACH $\pm 0.5^\circ$ BEND ± 1
TWO PLACE DECIMAL ± 0.1
THREE PLACE DECIMAL ± 0.01

PROPRIETARY AND CONFIDENTIAL
THE INFORMATION CONTAINED IN THIS
DRAWING IS THE SOLE PROPERTY OF
C & C HYDRAULICS LIMITED. ANY
REPRODUCTION IN PART OR AS A WHOLE
WITHOUT THE WRITTEN PERMISSION OF
C & C HYDRAULICS LIMITED IS PROHIBITED.

DO NOT SCALE DRAWING

	NAME	DATE
DRAWN	N.Carter	03/08/2023
CHECKED		
ENG APPR.		
MFG APPR.		
Q.A.		
COMMENTS:		



C & C HYDRAULICS LTD

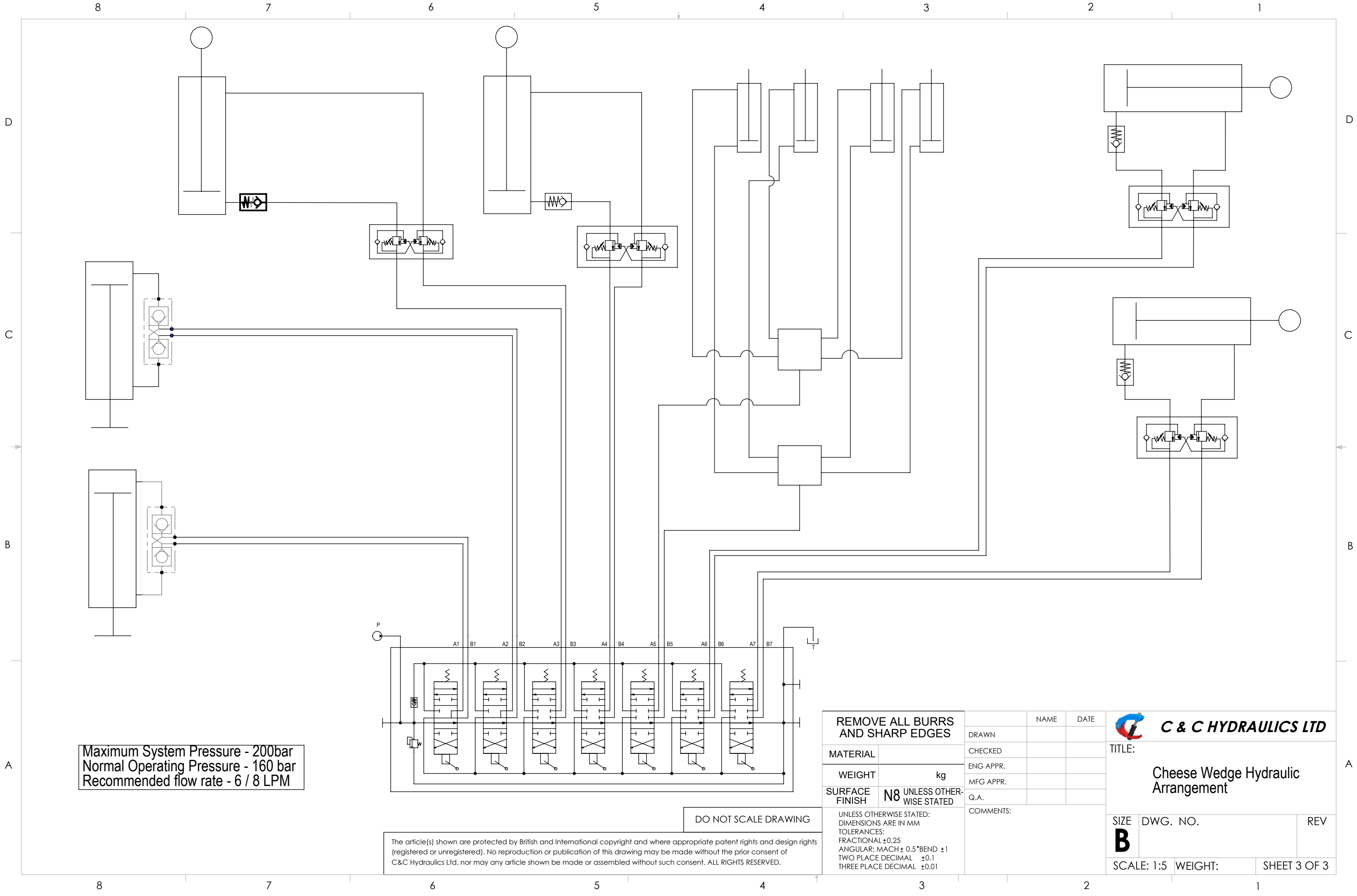
TITLE: Cheese Wedge Hydraulic
Arrangement

Supply Options

SIZE DWG. NO. REV

B


SCALE: 1:5 WEIGHT: SHEET 2 OF 3



Maximum System Pressure - 200bar
Normal Operating Pressure - 160 bar
Recommended flow rate - 6 / 8 LPM

DO NOT SCALE DRAWING

The article(s) shown are protected by British and International copyright and where appropriate patent rights and design rights (registered or unregistered). No reproduction or publication of this drawing may be made without the prior consent of C&C Hydraulics Ltd. nor may any article shown be made or assembled without such consent. ALL RIGHTS RESERVED.

REMOVE ALL BURRS AND SHARP EDGES		DRAWN	NAME	DATE	 C & C HYDRAULICS LTD TITLE: Cheese Wedge Hydraulic Arrangement	
MATERIAL		CHECKED				
WEIGHT	kg	ENG APPR.				
SURFACE FINISH	N8 UNLESS OTHER- WISE STATED	MFG APPR.				
UNLESS OTHERWISE STATED: DIMENSIONS ARE IN MM TOLERANCES: FRACTIONAL ±0.25 ANGULAR: MACH ± 0.5° BEND ±1 TWO PLACE DECIMAL ±0.1 THREE PLACE DECIMAL ±0.01		Q.A. COMMENTS:			SIZE B	DWG. NO.
					SCALE: 1:5	WEIGHT:
					SHEET 3 OF 3	